

PDP-15 Systems

TC15 DECtape Control Maintenance Manual Volume 2

PDP-15 SYSTEMS
TC15
DECTAPE CONTROL
MAINTENANCE MANUAL
VOLUME 2

Copyright © 1971 by Digital Equipment Corporation

The material in this manual is for informational purposes and is subject to change without notice.

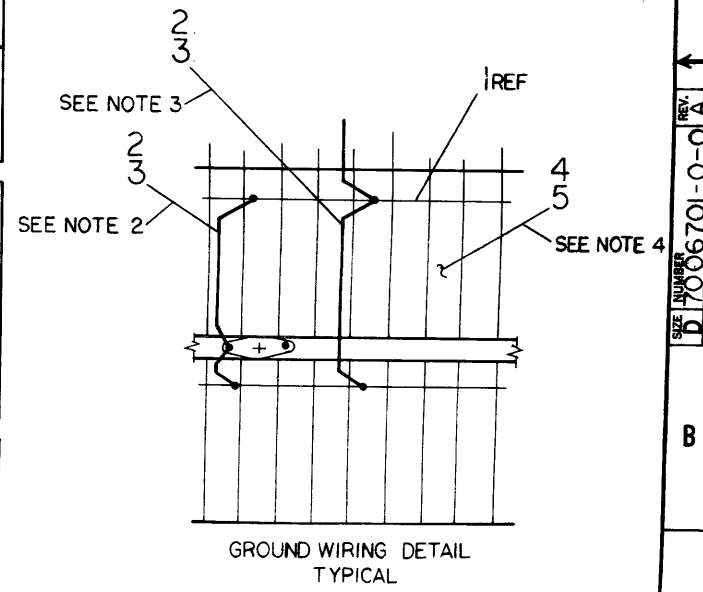
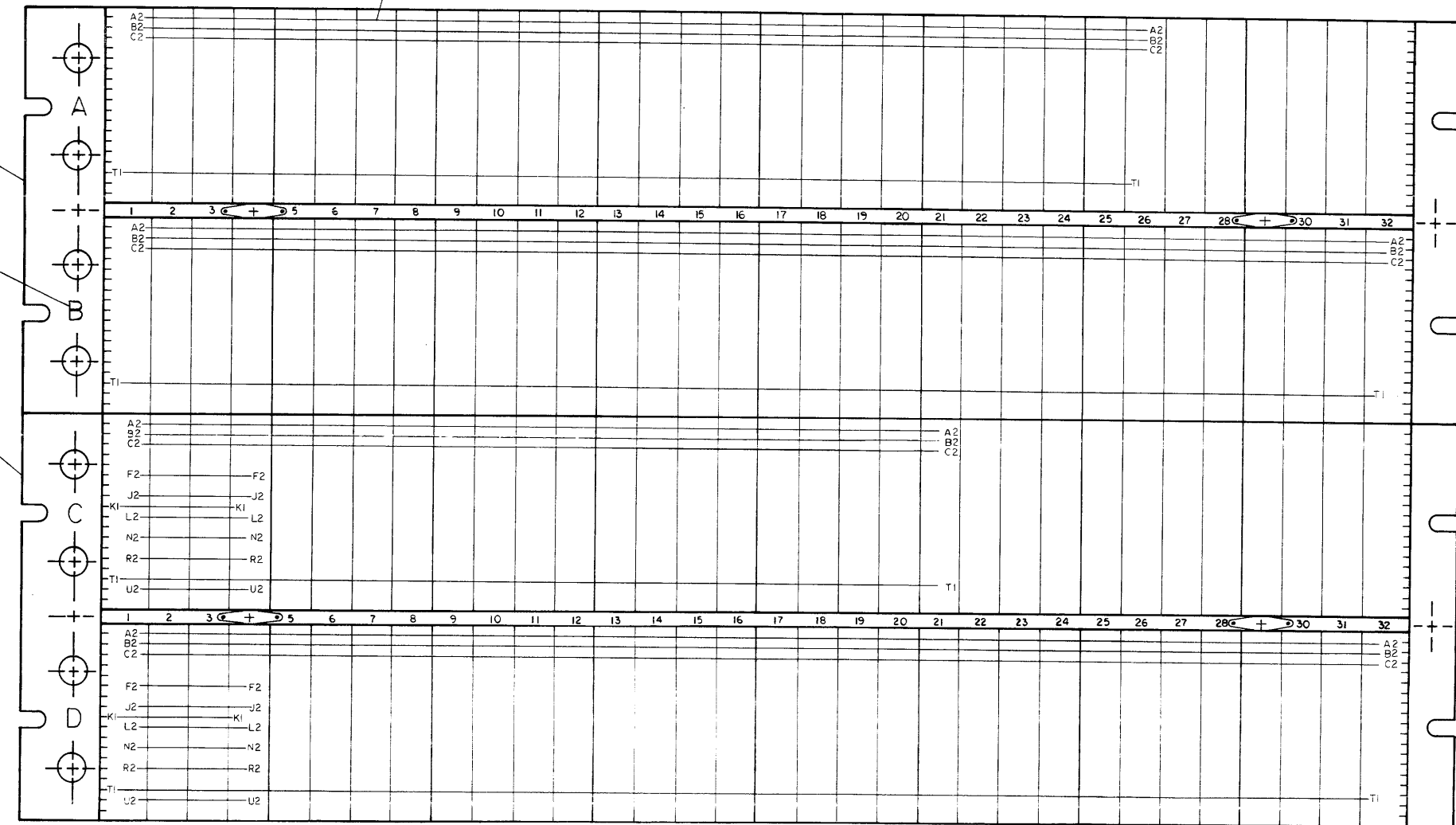
The following are trademarks of Digital Equipment Corporation, Maynard, Massachusetts:

DEC	PDP
FLIP CHIP	FOCAL
DIGITAL	COMPUTER LAB

This drawing and specifications, herein, are the property of Digital Equipment Corporation and shall not be reproduced or copied or used in whole or in part as the basis for the manufacture or sale of items without written permission.

REV. A
 NUMBER 7006701-0-0
 SIZE 2

- NOTES:
1. CONNECTIONS ON ITEM NUMBER 1#2 TO BE LOCATED AND SOLDERED AT MINIMUM PRACTICAL HEIGHT ABOVE BLOCKS.
 2. ALL CONNECTOR BLOCKS TO BE GROUNDED TO GROUND LUGS AS SHOWN, 4 PLACES
 3. JUMPER GROUND BUSSING AS SHOWN, 8 PLACES.
 4. USE YELLOW WIRE (ITEM#4) FOR MACHINE WRAPPED AND BLUE WIRE (ITEM#5) FOR HAND WRAPPED WIRING.

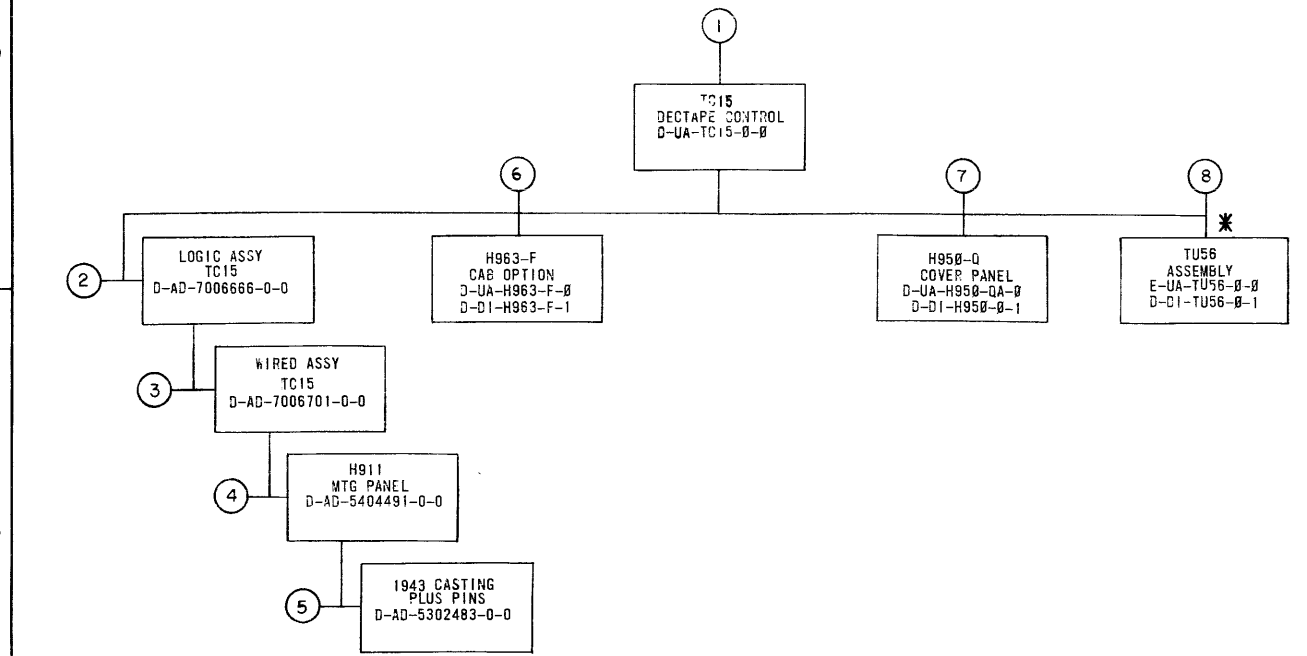


REV.	CHG. NO.	DATE	BY
A	15-00001	7-2-70	P. LAZUKA
		7-6-70	

FIRST USED ON OPTION/MODEL	QTY.	DESCRIPTION	PART NO.	ITEM NO.
TC15				
DO NOT SCALE DRAWING		DRN. DATE 1/14/70	PARTS LIST	
UNLESS OTHERWISE SPECIFIED DIMENSION IN INCHES		CHK'D. DATE 1/14/70	digital EQUIPMENT CORPORATION MAYNARD, MASSACHUSETTS	
TOLERANCES		ENG. DATE 2-3-70	TITLE	
DECIMALS FRACTIONS ANGLES		PROJ. ENG. DATE 2-3-70	WIRED ASS'Y (TC15)	
+ .005 = 1/64 = 0.30°		PROD. DATE 2-3-70	NEXT HIGHER ASSY	
FINAL SURFACE QUALITY			C-AD-7006666-0-0	
REMOVE BURRS AND BREAK SHARP CORNERS			SCALE NONE	
MATERIAL			SIZE CODE NUMBER	
			D AD 7006701-0-0	
FINISH			REV. A	
			SHEET 1 OF 1	

REV. A
 NUMBER 7006701-0-0
 SIZE 2

This drawing and specifications, herein, are the property of Digital Equipment Corporation and shall not be reproduced or copied or used in whole or in part as the basis for the manufacture or sale of items without written permission.



* ASTERISK INDICATES OPTION

MECHANICAL				DEPT USAGE			ELECTRICAL				DEPT USAGE		
FIND NO	DESCRIPTION	PART NO.	CUST	PROD	F/C	FIND NO	DESCRIPTION	PART NO.	CUST	PROD	F/C		
1.	TC15 DECTAPE CONTROL TC15 DECTAPE CONTROL (PL) BC0-B CABLE ASSY	D-UA-TC15-0-0 A-PL-TC15-0-0 D-UA-BC0-B				1	DECTAPE CONTROL TC15 TC15 SPECIFICATIONS	A-ML-TC15-0 A-SP-TC15-0-20					
2.	LOGIC ASSY TC15 LOGIC ASSY TC15 (PL)	D-AD-7003666-0-0 A-PL-7003666-0-0					I/O BUS RECEIVERS I/O CONTROL AND P/W AMPS STATUS REGISTER A TP GEN MARK TRACK DECODE CONTROL ERRORS DB00-02 DTB00-02 DB 3-5 DTB 3-5 DB 6-8 DTB 6-8 DB 09-11 DTB 09-11 DB 12-14 DTB 12-14 DB 15-17 DTB 15-17 BUS DRIVERS CABLES	D-BS-TC15-0-02 D-BS-TC15-0-03 D-BS-TC15-0-04 D-BS-TC15-0-05 D-BS-TC15-0-06 D-BS-TC15-0-07 D-BS-TC15-0-08 D-BS-TC15-0-09 D-BS-TC15-0-10 D-BS-TC15-0-11 D-BS-TC15-0-12 D-BS-TC15-0-13 D-BS-TC15-0-14 D-BS-TC15-0-15 D-BS-TC15-0-16					
3.	WIRED ASSY TC15 WIRED ASSY TC15 (PL) LOGIC FRAME DECALS 288 PIN BLOCK	D-AD-7006701-0-0 A-PL-7006701-0-0 A-DC-7106371-0-0 E-SC-1205348-0-0					MODULE UTILIZATION	K-PL-TC15-0-17					
4.	H911 MTG PANEL H911 MTG PANEL (PL)	D-AD-5404491-0-0 A-PL-5404491-0-0					WIRE LIST TC15 AC/DC PWR WIRING TIMING DIAGRAM ACCEPTANCE PROCEDURE MODULE UTILIZATION	K-ML-TC15-0-18 D-IC-TC15-0-19 D-TD-TC15-0-20 A-SP-TC15-0-23 D-MU-TC15-0-17					
5.	1943 CASTING PLUS PINS 1943 CASTING PLUS PINS (PL) 1943 FRAME CASTING	D-AD-5302483-0-0 A-PL-5302483-0-0 E-MD-1202885-0-0											
6.	H963-F CAB OPTION H963-F CAB OPTION (PL) DWG INDEX H963-F	D-UA-H963-F-0 A-PL-H963-F-0 D-DI-H963-F-1											
7.	H950-Q COVER PANEL H950-Q COVER PANEL (PL) DWG INDEX H950	D-UA-H950-QA-0 A-PL-H950-QA-0 D-DI-H950-Q-1											
8 *	TU56 ASSEMBLY TU56 ASSEMBLY (PL) DWG INDEX TU56	E-UA-TU56-0-0 A-PL-TU56-0-0 D-DI-TU56-0-1											

CHK	REVISIONS	CHANGE NO.	REV.
	TC15-00001	A	1/1/70
	TC15-00005	B	1/1/70
	TC15-00007	C	1/14/71
	TC15-00009	D	1/26/71
	TC15-00010	E	5/12/71

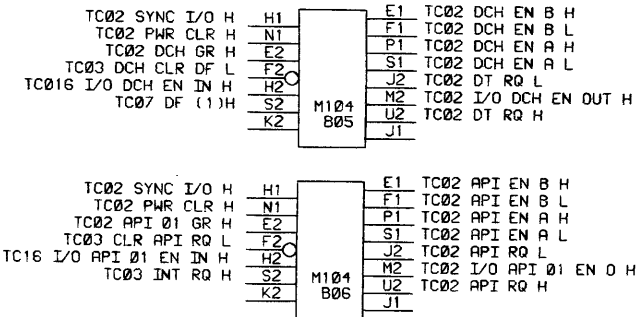
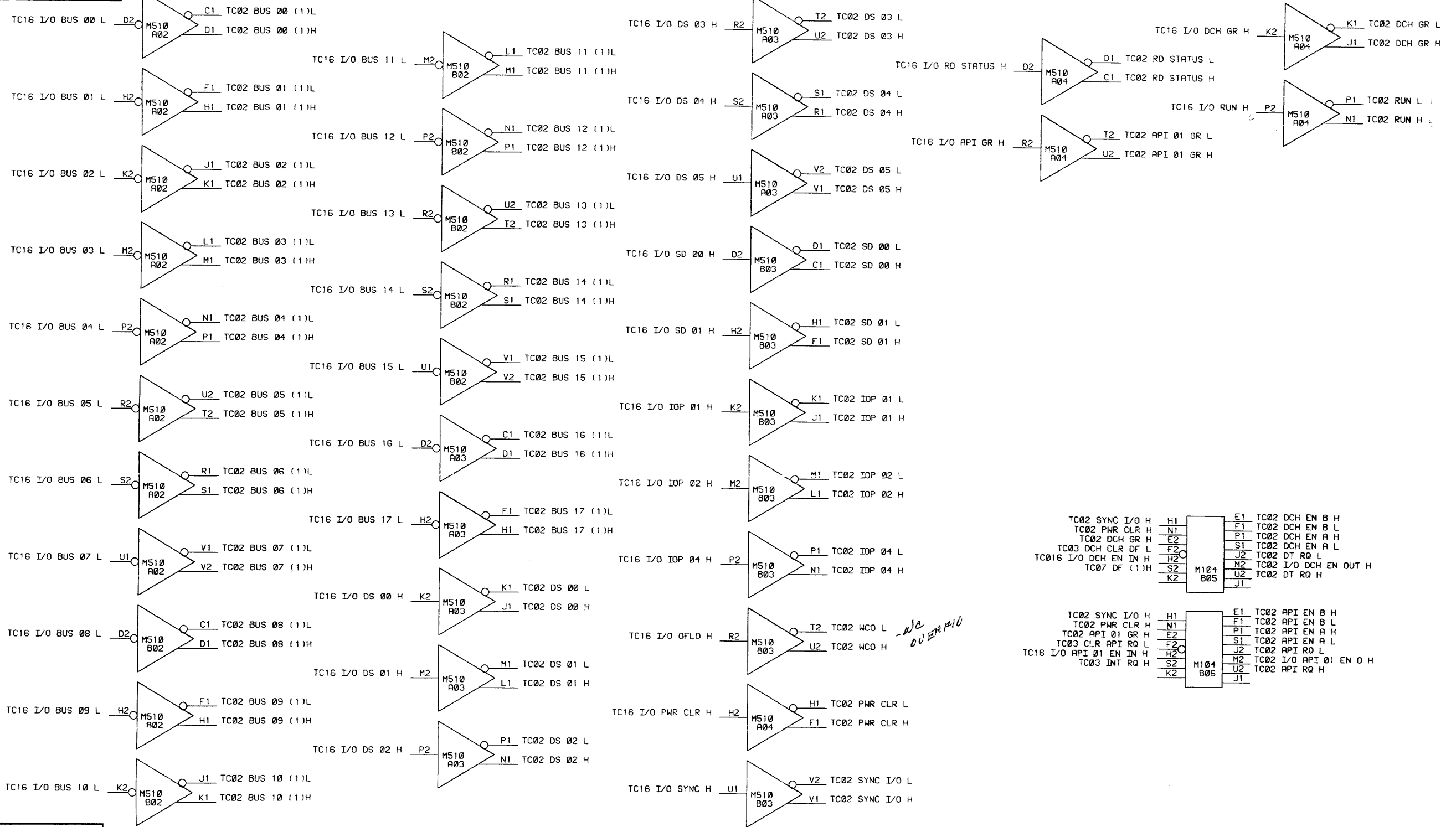
QTY.	DESCRIPTION	PART NO.	ITEM NO.
PARTS LIST			
FIRST USED ON OPTION / MODEL		DO NOT SCALE DRAWING	
UNLESS OTHERWISE SPECIFIED		DIMENSION IN INCHES	
TOLERANCES		ANGLES	
DECIMALS ± .005	FRACTIONS ± 1/64	± 0°30'	
FINAL SURFACE QUALITY		REMOVE BURRS AND BREAK SHARP CORNERS	
MATERIAL	NEXT HIGHER ASSY		
FINISH	D-UA-TC15-0-0		
SCALE	SIZE CODE		
SHEET 1 OF 1	NUMBER		REV.
	DDI TC15-0-1		E

digital EQUIPMENT CORPORATION
MAYNARD, MASSACHUSETTS

TITLE
DWG INDEX
TC15

REV. E
NUMBER
DDI TC15-0-1
B

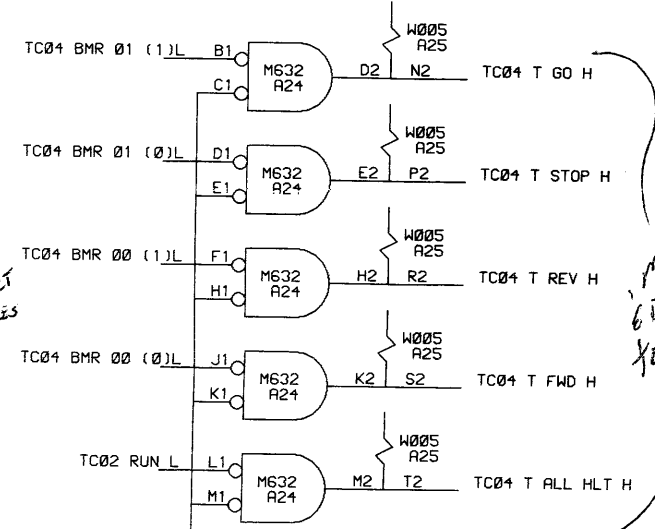
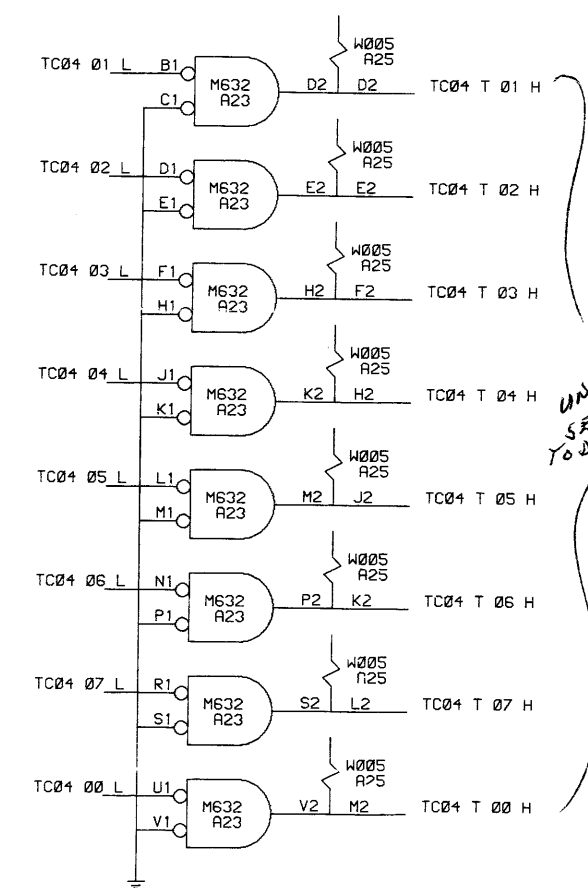
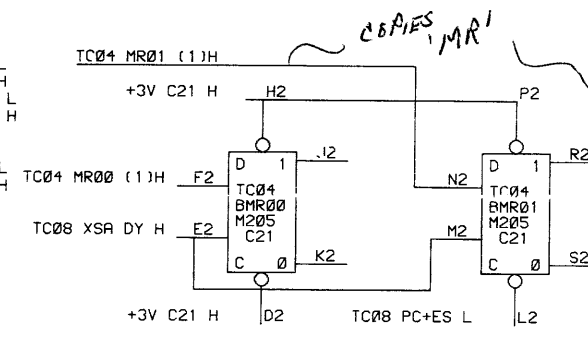
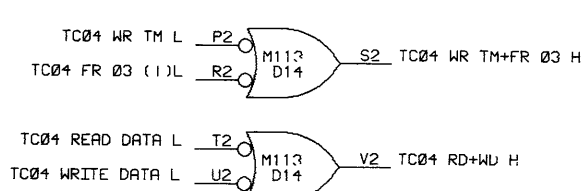
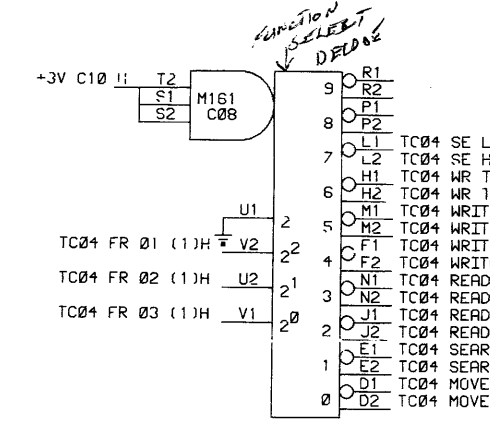
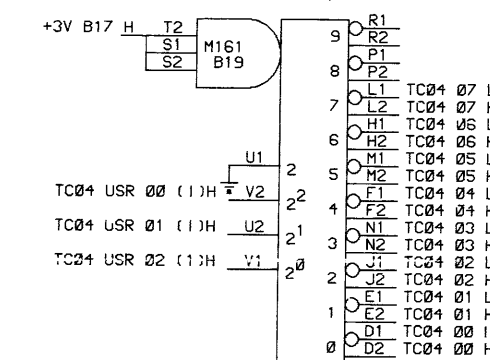
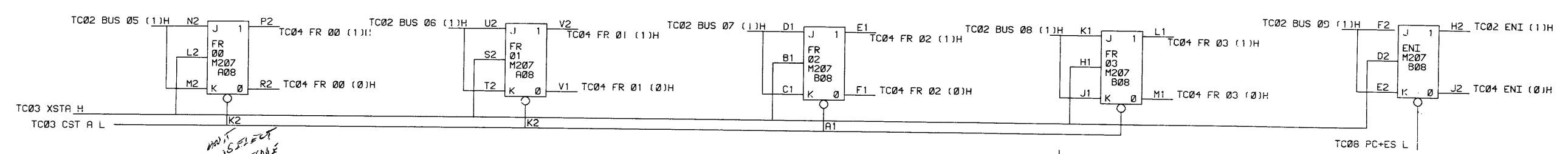
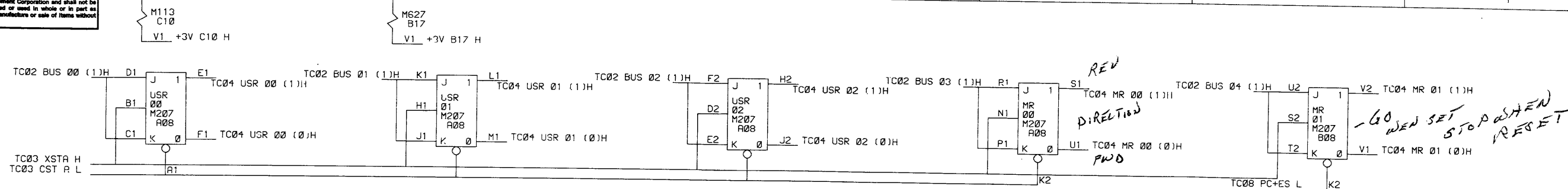
This drawing and specifications, herein, are the property of Digital Equipment Corporation and shall not be reproduced or copied or used in whole or in part as the basis for the manufacture or sale of items without written permission.



REVISIONS		
CHK	CHANGE NO.	REV.
MA	TC15-00008	A

DRN. K COTE	DATE 7-6-70	digital EQUIPMENT CORPORATION MAYNARD, MASSACHUSETTS
CHKD. D LAZUKA	DATE 7-6-70	
ENG. D LAZUKA	DATE 7-6-70	TITLE I/O BUS RECEIVERS
PROJ. ENG. D LAZUKA	DATE 7-6-70	
PROD. G BUNDY	DATE 7-6-70	
FIRST USED ON TC15	SIZE CODE D BS	NUMBER TC15-0-02
SCALE	DIST.	REV. A
SHEET 1 OF 1		

This drawing and specifications, herein, are the property of Digital Equipment Corporation and shall not be reproduced or copied in whole or in part as the basis for the manufacture or sale of items without written permission.

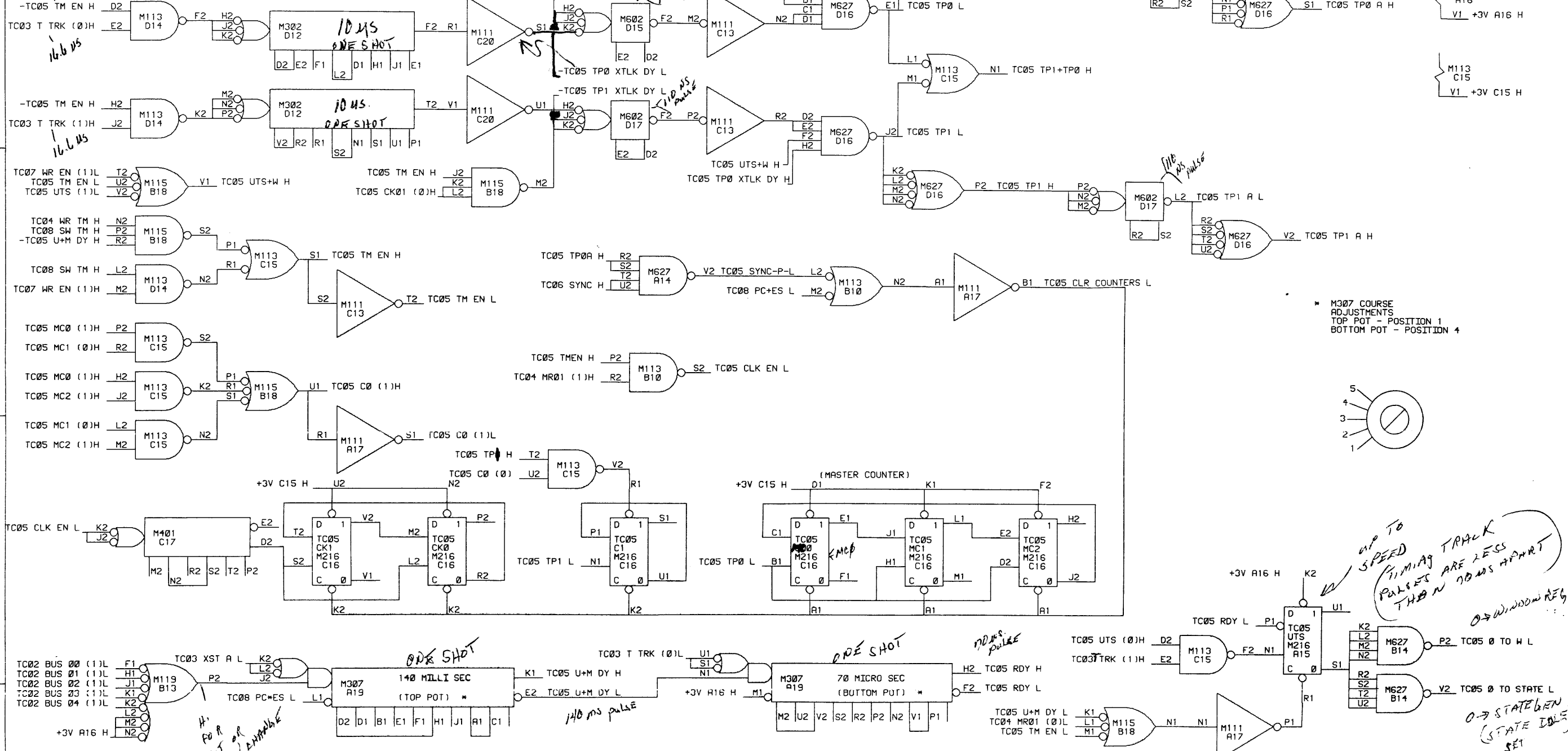


REVISIONS		
CHK	CHANGE NO.	REV.

DESIGNED <i>R. Cote</i> DATE 2-1-70	CHECKED <i>D. Cote</i> DATE 2-1-70	digital EQUIPMENT CORPORATION MAYNARD, MASSACHUSETTS
ENGR <i>D. Cote</i> DATE 2-1-70	PROJ. ENGR <i>D. Cote</i> DATE 2-1-70	
TITLE STATUS REGISTER A		TC15 SIZE CODE D BS NUMBER TC15-0-04 REV. 1
FIRST USED ON TC15 SCALE SHEET 1 OF 1		

This drawing and specifications, herein, are the property of Digital Equipment Corporation and shall not be reproduced or copied in whole or in part for the manufacture or sale of items without written permission.

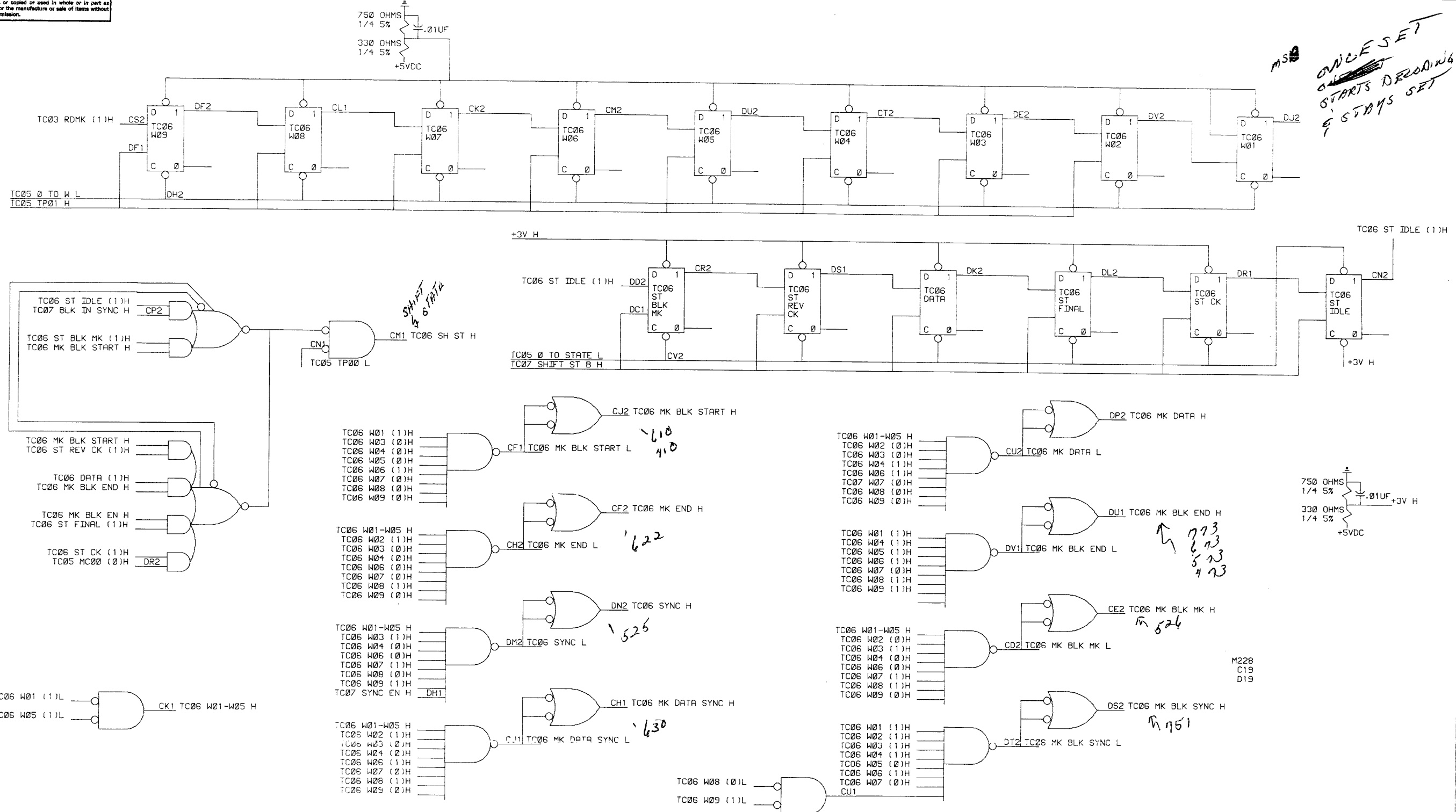
16.6 us
16.6 us



REVISIONS		
CHK	CHANGE NO.	REV.
TC	TC15-00003	A
	J PETERS 8/10/70	
	J SWANSON 8/12/70	
GH	TC15-00005	B
	N LEGERE 10/9/70	
	J SWANSON 10/12/70	
GH	TC15-00006	C
	N LEGERE 10-15-70	
	J SWANSON 10-19-70	
GH	TC15-00010	D
	G. WATT 5-19-71	
	Summa-5/20/71	

DRN K COTE	DATE 7-6-70	 digital EQUIPMENT CORPORATION MAYNARD, MASSACHUSETTS
CHK'D D LAZUKA	DATE 7-6-70	
ENG D LAZUKA	DATE 7-6-70	
PROJ. ENG D LAZUKA	DATE 7-6-70	
PROD. G BUNDY	DATE 7-6-70	
TITLE TP GEN		
FIRST USED ON TC15		
SCALE SHEET 1 OF 1	SIZE/ CODE D BS	NUMBER TC15-0-05
	DIST.	REV. D

This drawing and specifications, herein, are the property of Digital Equipment Corporation and shall not be reproduced or copied or used in whole or in part as the basis for the manufacture or sale of items without written permission.



MSB
ONCE SET
STARTS DECODING
& STAYS SET

SHIFT
6 TRK

773
673
573
473

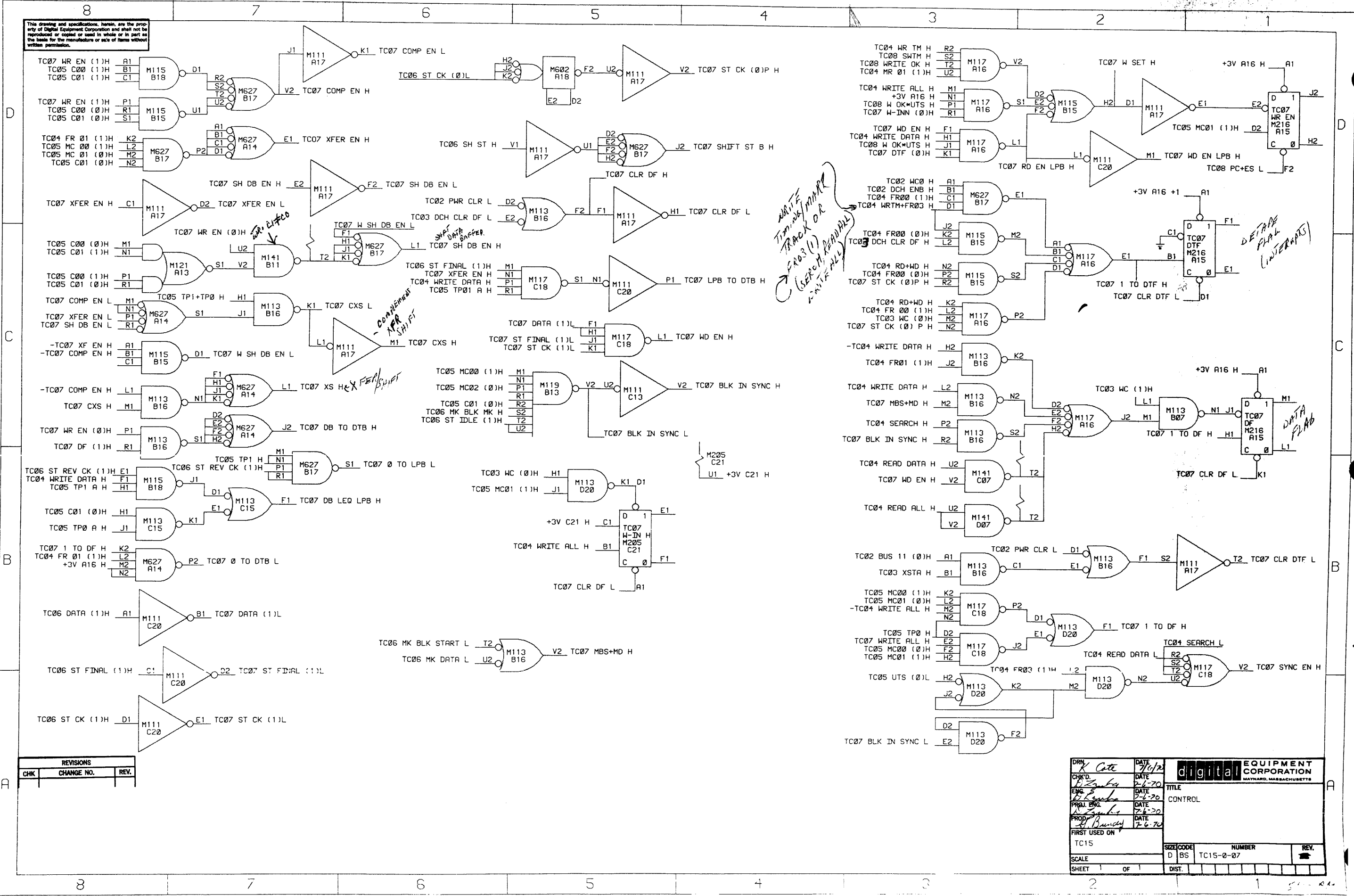
M 526

M 1751

REVISIONS		
CHK	CHANGE NO.	REV.

DRN K. Cate	DATE 7/14/70	digital EQUIPMENT CORPORATION MAYNARD, MASSACHUSETTS
CHK'D S. G. La	DATE 7-15-70	
ENG S. G. La	DATE 7-2-70	
PROJ. ENG. S. G. La	DATE 7-2-70	
PROP. S. G. La	DATE 7-2-70	
FIRST USED ON TC15		
TITLE MARK TRACK DECODE		SIZE CODE D BS TC15-0-06
SCALE SHEET 1 OF 1	NUMBER REV.	

This drawing and specifications, herein, are the property of Digital Equipment Corporation and shall not be reproduced or copied in whole or in part as the basis for the manufacture or sale of items without written permission.

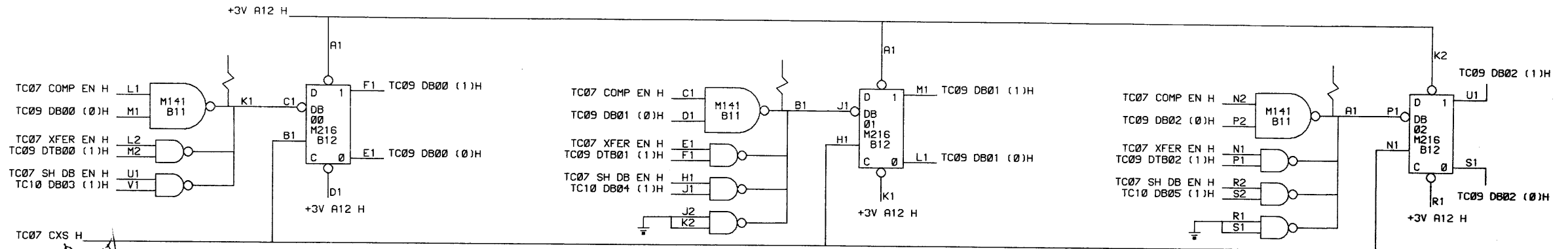


REVISIONS		
CHK	CHANGE NO.	REV.

DRN K Cote	DATE 7/6/70	digital EQUIPMENT CORPORATION MAYNARD, MASSACHUSETTS
CHK'D. D. Bandy	DATE 7-6-70	
ENG. D. Bandy	DATE 7-6-70	TITLE CONTROL
PRAL ENG. D. Bandy	DATE 7-6-70	
PROD. D. Bandy	DATE 7-6-70	
FIRST USED ON TC15		
SCALE D BS	NUMBER TC15-0-07	REV.
SHEET 1 OF 1	DIST.	

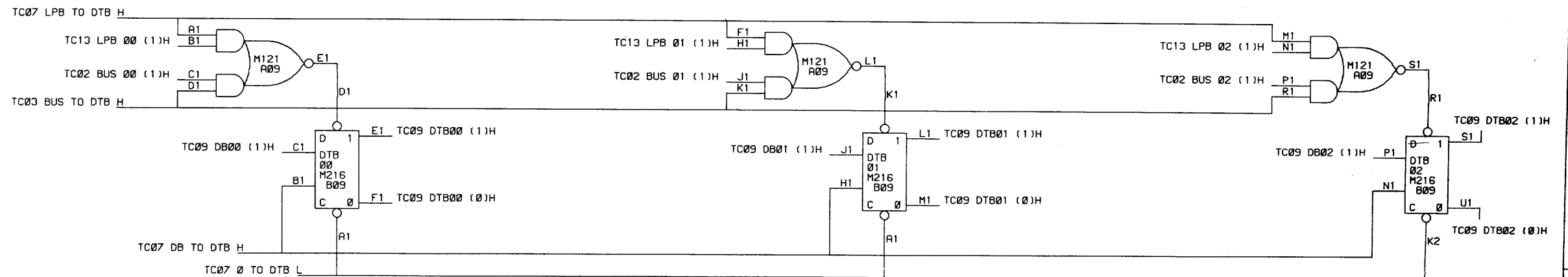
This drawing and specifications, herein, are the property of Digital Equipment Corporation and shall not be reproduced or copied or used in whole or in part as the basis for the manufacture or sale of items without written permission.

DATA BUFFER



COMPLEMENT
XFER/SHIFT

DEL TAPE
BUFFER



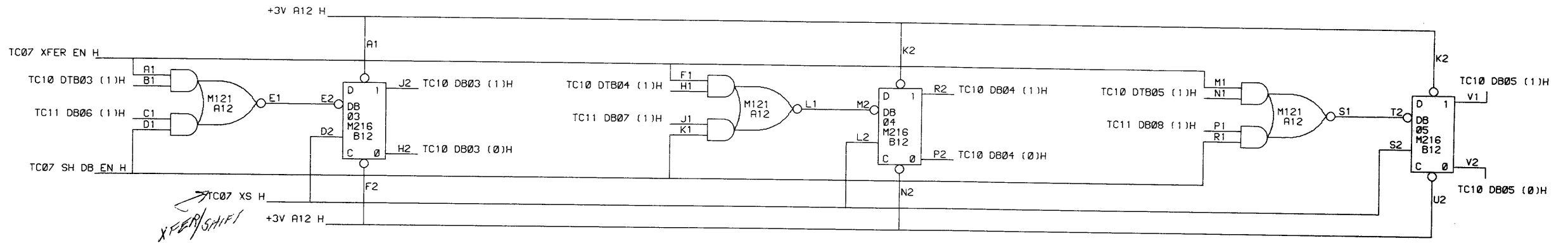
REVISIONS		
CHK	CHANGE NO.	REV.

DRN: <i>K. Cate</i>	DATE: 7/6/70	 digital EQUIPMENT CORPORATION <small>MAYNARD, MASSACHUSETTS</small>
CHKD: <i>D. Gandy</i>	DATE: 7-6-70	
ENG: <i>D. Gandy</i>	DATE: 7-6-70	
PROJ. ENG: <i>D. Gandy</i>	DATE: 7-6-70	
PROD: <i>D. Gandy</i>	DATE: 7-6-70	
FIRST USED ON		TITLE
TC15		DB00-02 DTB00-02
SCALE	SIZE CODE	NUMBER
SHEET 1 OF 1	D BS	TC15-0-09
DIST.		REV.

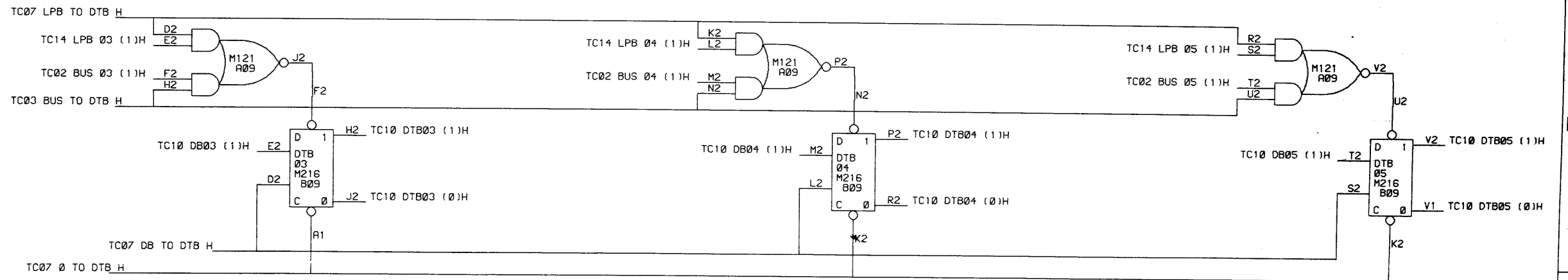
This drawing and specifications, herein, are the property of Digital Equipment Corporation and shall not be reproduced or copied or used in whole or in part as the basis for the manufacture or sale of items without written permission.

M121
A12
V1 +3V A12 H

DATA BUFFER



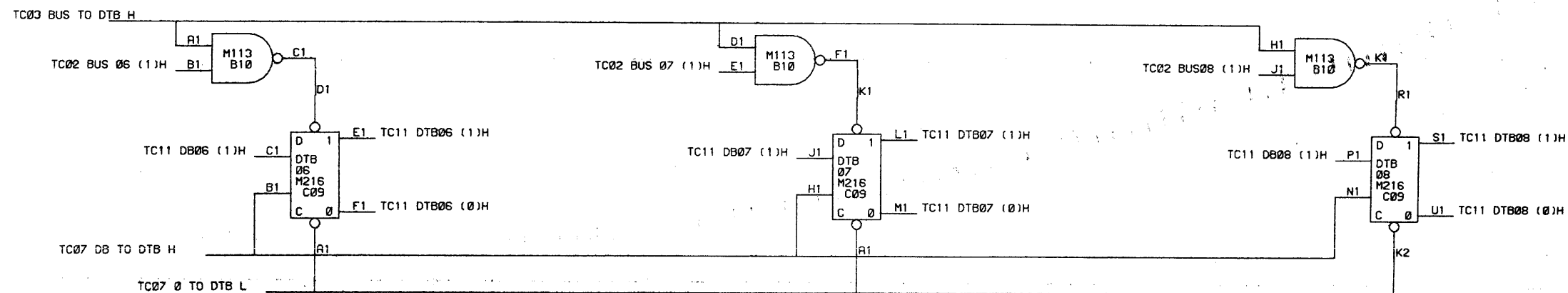
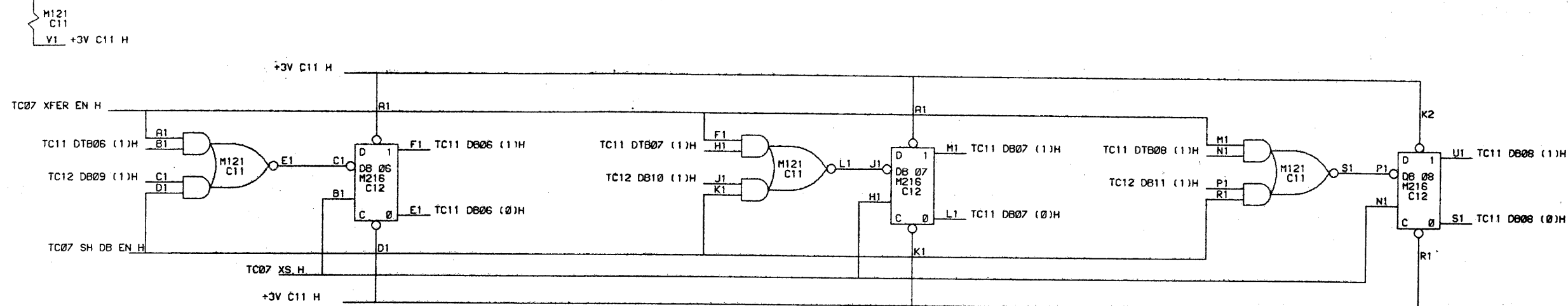
DEC TAPE BUFFER



REVISIONS		
CHK	CHANGE NO.	REV.

DRN <i>K. Cote</i>	DATE 7/6/7	<p>digital EQUIPMENT CORPORATION MAYNARD, MASSACHUSETTS</p>
CHK'D <i>R. Zarka</i>	DATE 7-6-70	
ENGR <i>R. Zarka</i>	DATE 7-6-70	
PRJ. ENGR <i>R. Zarka</i>	DATE 7-6-70	
PROD. ENGR <i>J. Dundy</i>	DATE 7-6-70	
FIRST USED ON TC15	DATE	
TITLE DB 3-5 DTB 3-5		SIZE/CODE D BS
SCALE		NUMBER TC15-0-10
SHEET OF		DIST.

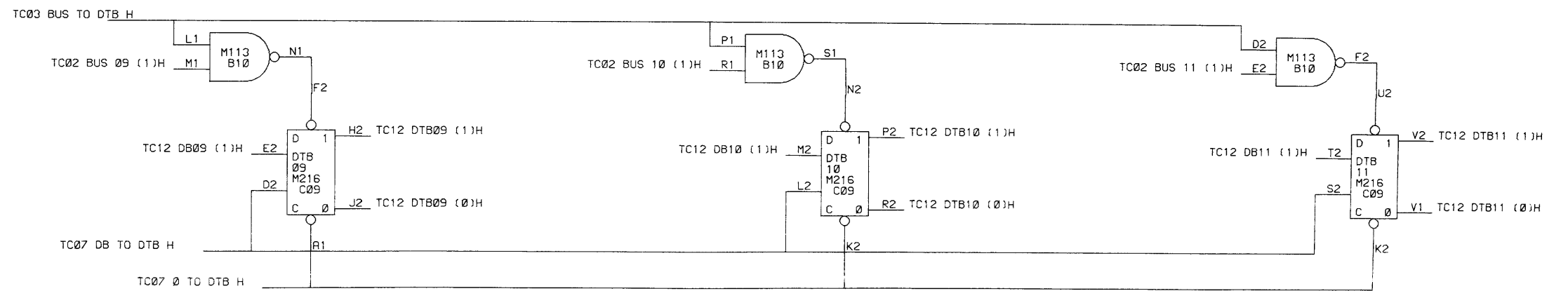
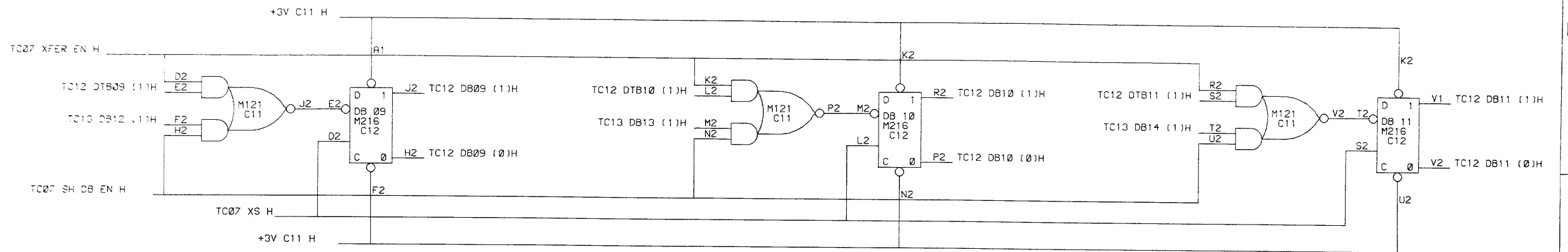
This drawing and specifications, herein, are the property of Digital Equipment Corporation and shall not be reproduced or copied or used in whole or in part as the basis for the manufacture or sale of items without written permission.



REVISIONS		
CHK	CHANGE NO.	REV.

DRN <i>K. Cote</i>	DATE 7/6/70	digital EQUIPMENT CORPORATION MAYHARD, MASSACHUSETTS
CHKD <i>R. Lyndon</i>	DATE 7-4-70	
ENR <i>R. Lyndon</i>	DATE 7-4-70	TITLE DB 6-8 DTB 6-8
PRG. ENG. <i>R. Lyndon</i>	DATE 7-4-70	
PROD. <i>N. Bundy</i>	DATE 7-6-70	
FIRST USED ON TC15	SIZE CODE D BS	NUMBER TC15-0-11
SCALE	SHEET 1 OF 1	DIST.

This drawing and specifications, herein, are the property of Digital Equipment Corporation and shall not be reproduced or copied or used in whole or in part as the basis for the manufacture or sale of items without written permission.

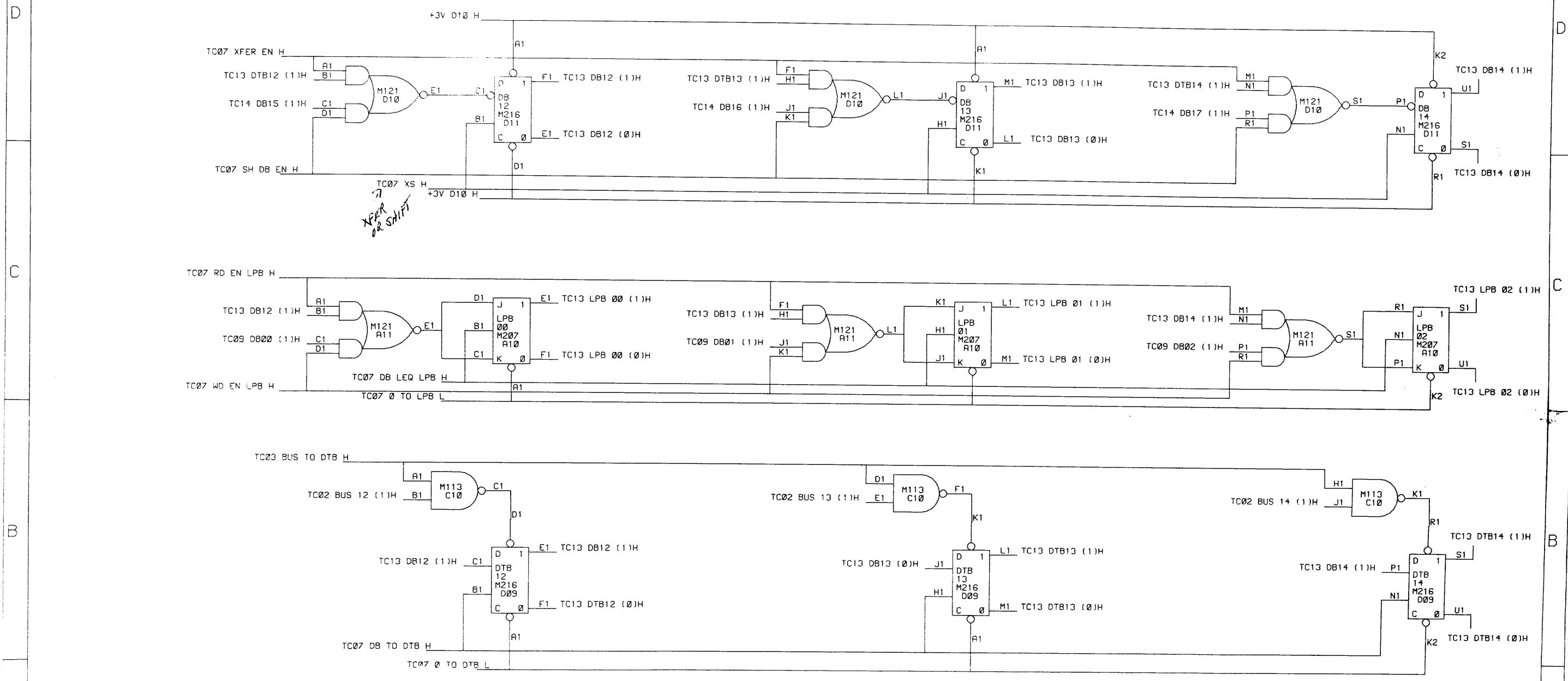


REVISIONS		
CHK	CHANGE NO.	REV.

DRN. <i>R. Cox</i>	DATE <i>7/6/70</i>	digital EQUIPMENT CORPORATION MAYNARD, MASSACHUSETTS
CHK'D. <i>W. Gamba</i>	DATE <i>7-6-70</i>	
ENG. <i>W. Gamba</i>	DATE <i>7-6-70</i>	
PRJ. ENG. <i>W. Gamba</i>	DATE <i>7-6-70</i>	
PROD. <i>W. Gamba</i>	DATE <i>7-6-70</i>	
TITLE		DB09-11 DTB09-11
FIRST USED ON		TC15
SCALE	SIZE CODE	NUMBER
SHEET 1 OF 1	D BS	TC15-0-12
DIST.		REV.

The drawing and specifications herein are the property of Digital Equipment Corporation and shall not be reproduced or copied or used in whole or in part as the basis for the manufacture or sale of items without written permission.

8 7 6 5 4 3 2 1



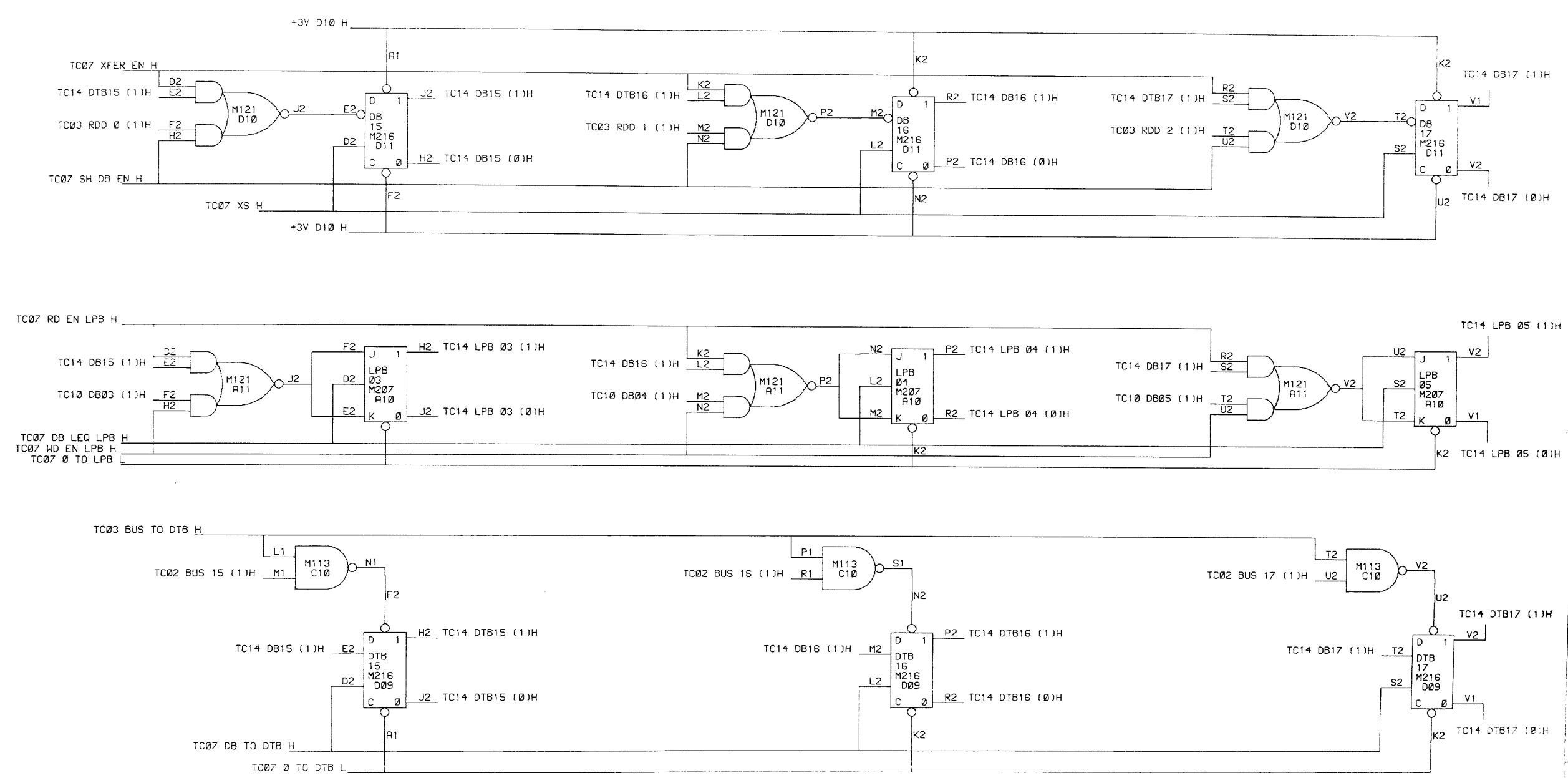
REVISIONS		
CHK	CHANGE NO.	REV.

DRN: <i>R. Cate</i>	DATE: <i>7/10/70</i>	digital EQUIPMENT CORPORATION MAYNARD, MASSACHUSETTS
CHK'D: <i>A. Egan-Lee</i>	DATE: <i>7-6-70</i>	
ENG: <i>A. Egan-Lee</i>	DATE: <i>7-6-70</i>	
PRBL. ENG: <i>A. Egan-Lee</i>	DATE: <i>7-6-70</i>	
PROG: <i>A. Deming</i>	DATE: <i>7-6-70</i>	
TITLE: DB 12-14 DTB 12-14		NUMBER: TC15-0-13 REV.
FIRST USED ON: TC15		
SCALE: D BS	DIST.	

8 7 6 5 4 3 2 1

This drawing and specifications, herein, are the property of Digital Equipment Corporation and shall not be reproduced or copied or used in whole or in part as the basis for the manufacture or sale of items without written permission.

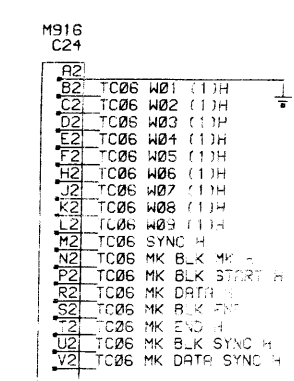
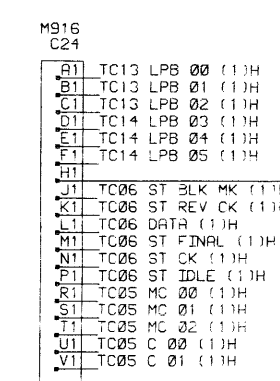
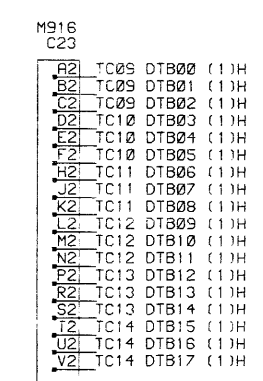
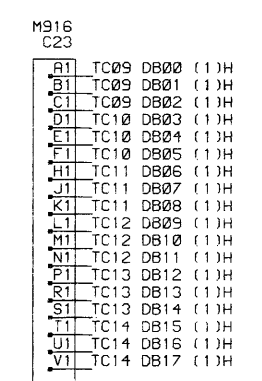
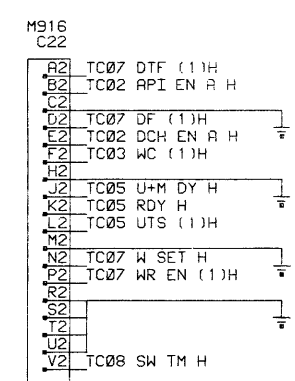
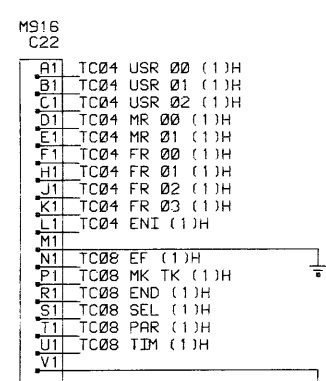
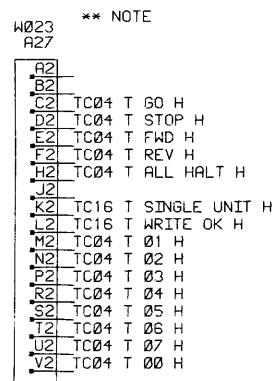
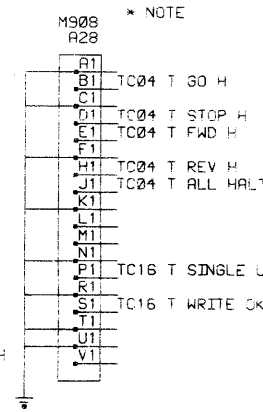
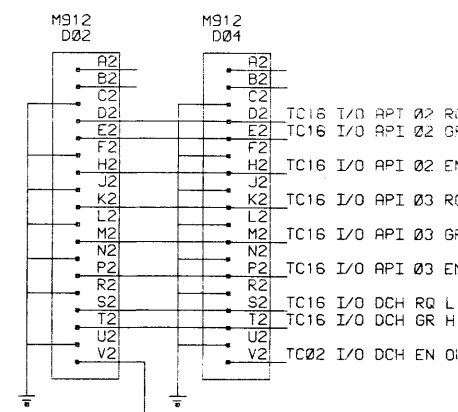
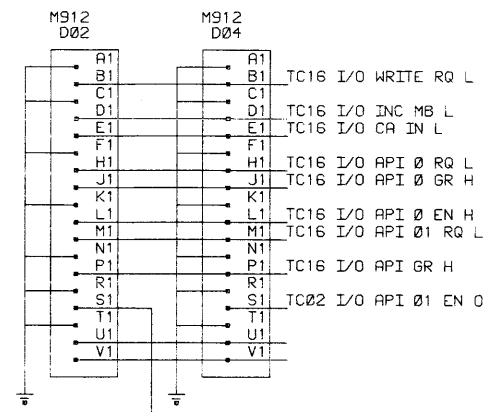
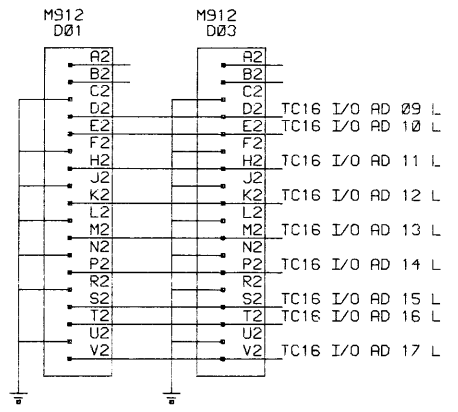
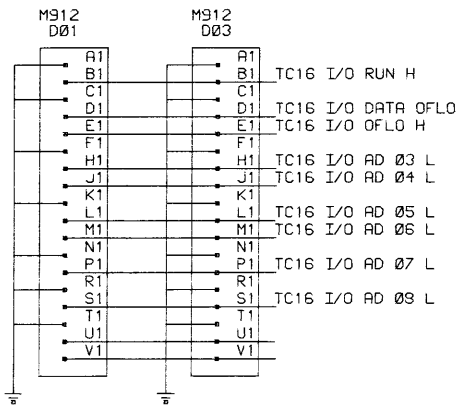
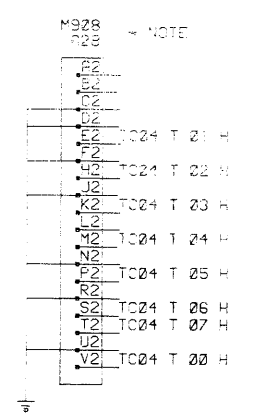
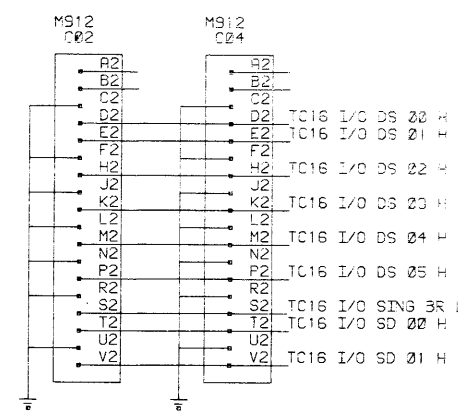
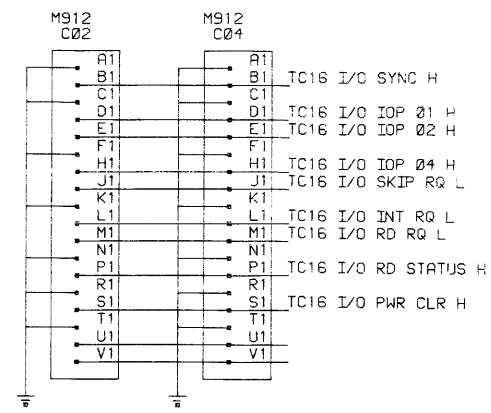
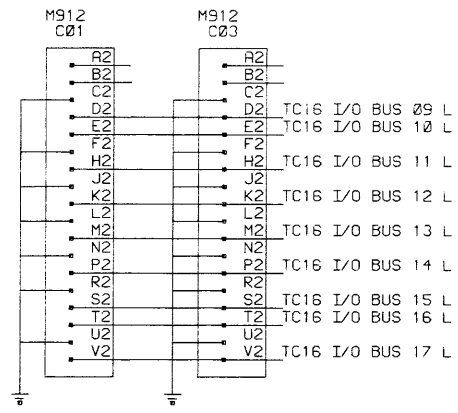
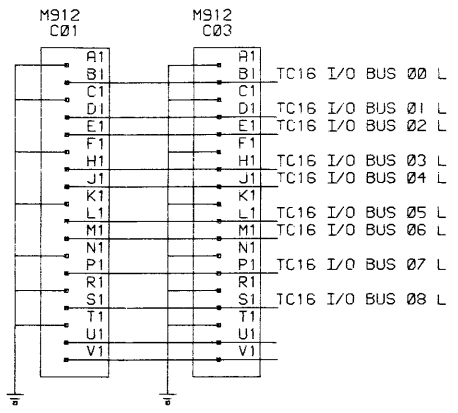
M121
D10
V1 +3V D10 H



REVISIONS		
CHK	CHANGE NO.	REV.

DRN K Cote	DATE 7/4/70	digital EQUIPMENT CORPORATION MAYNARD, MASSACHUSETTS
CHK'D M. Gamba	DATE 7-1-70	
ENR M. Gamba	DATE 7-6-70	
PRJ. ENG. M. Gamba	DATE 7-6-70	
PROD. S. D'Amico	DATE 7-6-70	
FIRST USED ON TC15		
TITLE DB 15-17 DTB 15-17		
SCALE SHEET 1 OF 1	SIZE CODE D BS	NUMBER TC15-0-14
DIST.		REV.

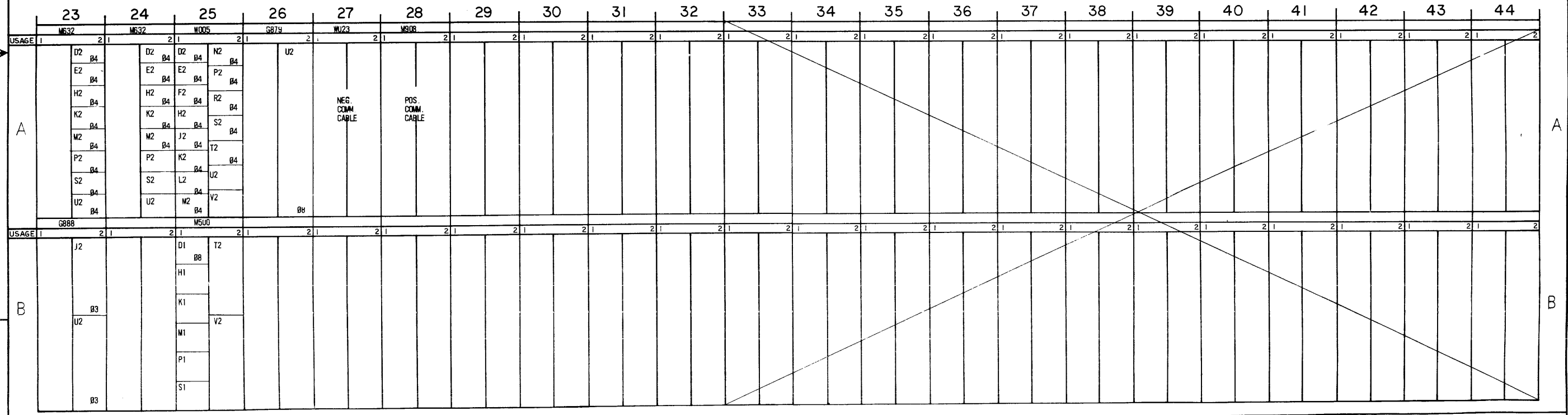
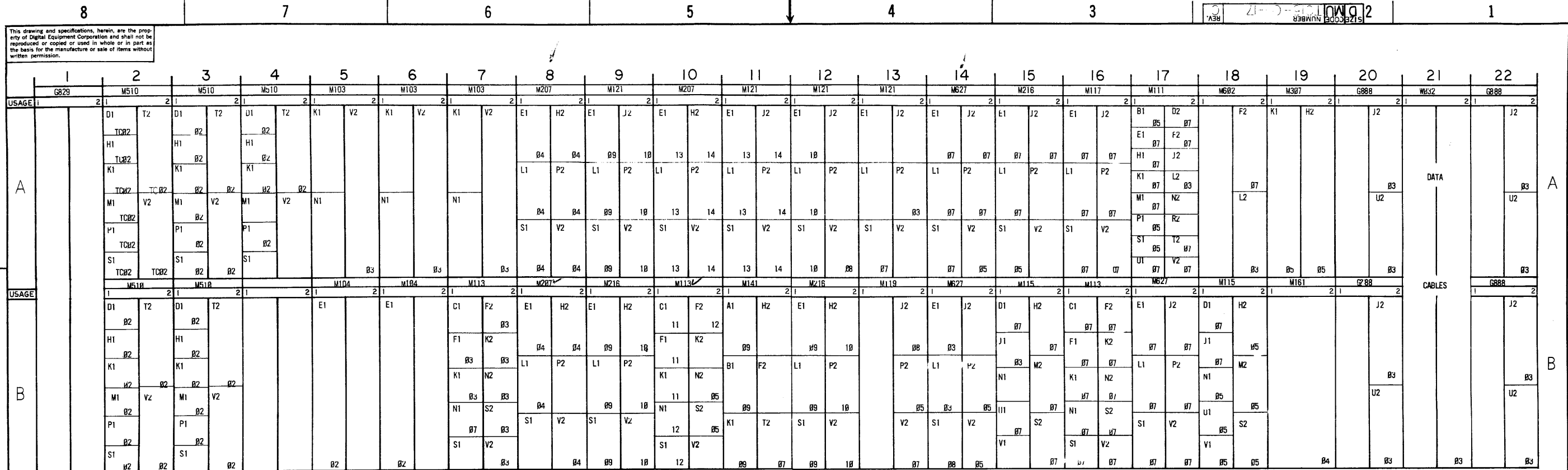
This drawing and specifications, herein, are the property of Digital Equipment Corporation and shall not be reproduced or copied or used in whole or in part as the basis for the manufacture or sale of items without written permission.



* TUSS ONLY
** TUSS ONLY

REVISIONS		
CHK	CHANGE NO.	REV.
GJH	TC15-00005	A
	N LEGERE 10-9-70	
	J SWANSON 10-9-70	
	TC15-00008	B

DRN K COTE	DATE 7/6/70	digital EQUIPMENT CORPORATION MAYNARD, MASSACHUSETTS
CHK'D D LAZUKA	DATE 7/6/70	
ENG. D LAZUKA	DATE 7/6/70	TITLE CABLES
PROJ. ENG. D LAZUKA	DATE 7/6/70	
PROD. G BUNDY	DATE 7/6/70	
FIRST USED ON TC15		
SCALE	SIZE CODE D BS	NUMBER TC15-0-16
SHEET 1 OF 1	DIST.	REV. B



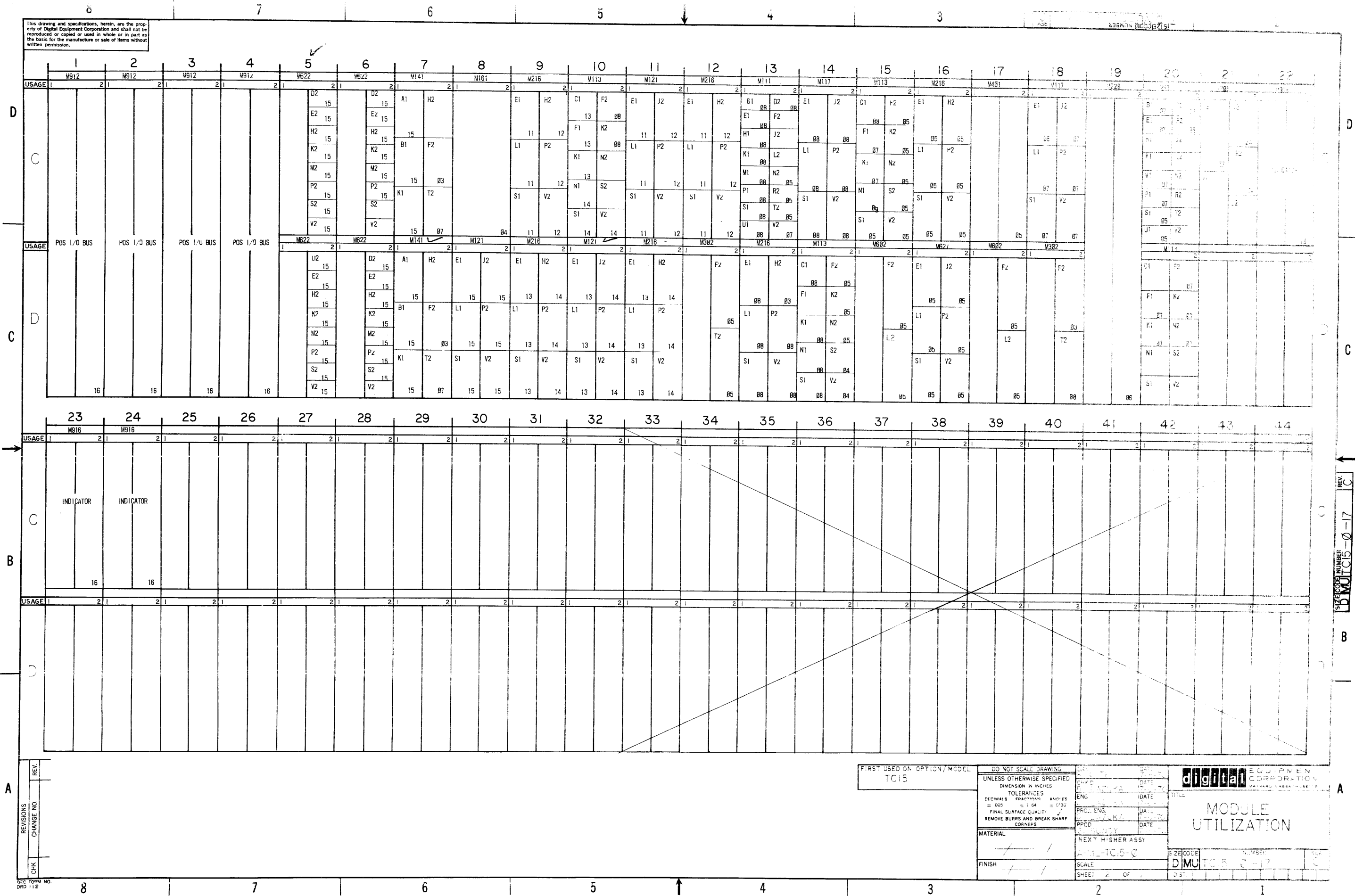
REVISIONS

CHK	CHANGE NO.	REV.
	TC15-00010	C
	REVISED - REDRAWN	
	5-2-71	
	SWANSON	

FIRST USED ON OPTION / MODEL TC15	DO NOT SCALE DRAWING UNLESS OTHERWISE SPECIFIED DIMENSION IN INCHES TOLERANCES DECIMALS FRACTIONS ANGLES ± .005 ± 1/64 ± 0°30' FINAL SURFACE QUALITY REMOVE BURRS AND BREAK SHARP CORNERS	DRN K. COTE DATE 7-2-70 CHK'D. D. LAZUKA DATE 7-8-70 ENG. D. LAZUKA DATE 7-10-70 PROJ. ENG. DATE 7-2-71 PROD. S. EUBANK DATE 7-2-71	DATE 7-2-70 DATE 7-8-70 DATE 7-10-70 DATE 7-2-71 DATE 7-2-71
	MATERIAL FINISH	NEXT HIGHER ASSY A-ML-TC15-0 SCALE NONE	TITLE MODULE UTILIZATION SIZE CODE D MU TC15-0-17 NUMBER REV. C

digital EQUIPMENT CORPORATION MAYNARD, MASSACHUSETTS	
TITLE MODULE UTILIZATION	SIZE CODE D MU TC15-0-17
NUMBER REV. C	
SHEET 1 OF 2	DIST.

This drawing and specifications, herein, are the property of Digital Equipment Corporation and shall not be reproduced or copied or used in whole or in part as the basis for the manufacture or sale of items without written permission.



REV	
CHK	
CHG	
NO.	

FIRST USED ON OPTION/MODEL
TC15

DO NOT SCALE DRAWING	
UNLESS OTHERWISE SPECIFIED	
DIMENSION IN INCHES	
TOLERANCES	
DECIMALS	FRACTIONS
± .005	± 1/64
FINAL SURFACE QUALITY	
REMOVE BURRS AND BREAK SHARP CORNERS	
MATERIAL	
FINISH	

digital EQUIPMENT CORPORATION

MODULE UTILIZATION

SIZE CODE: DIMU TC15-0-17

SHEET 2 OF 2

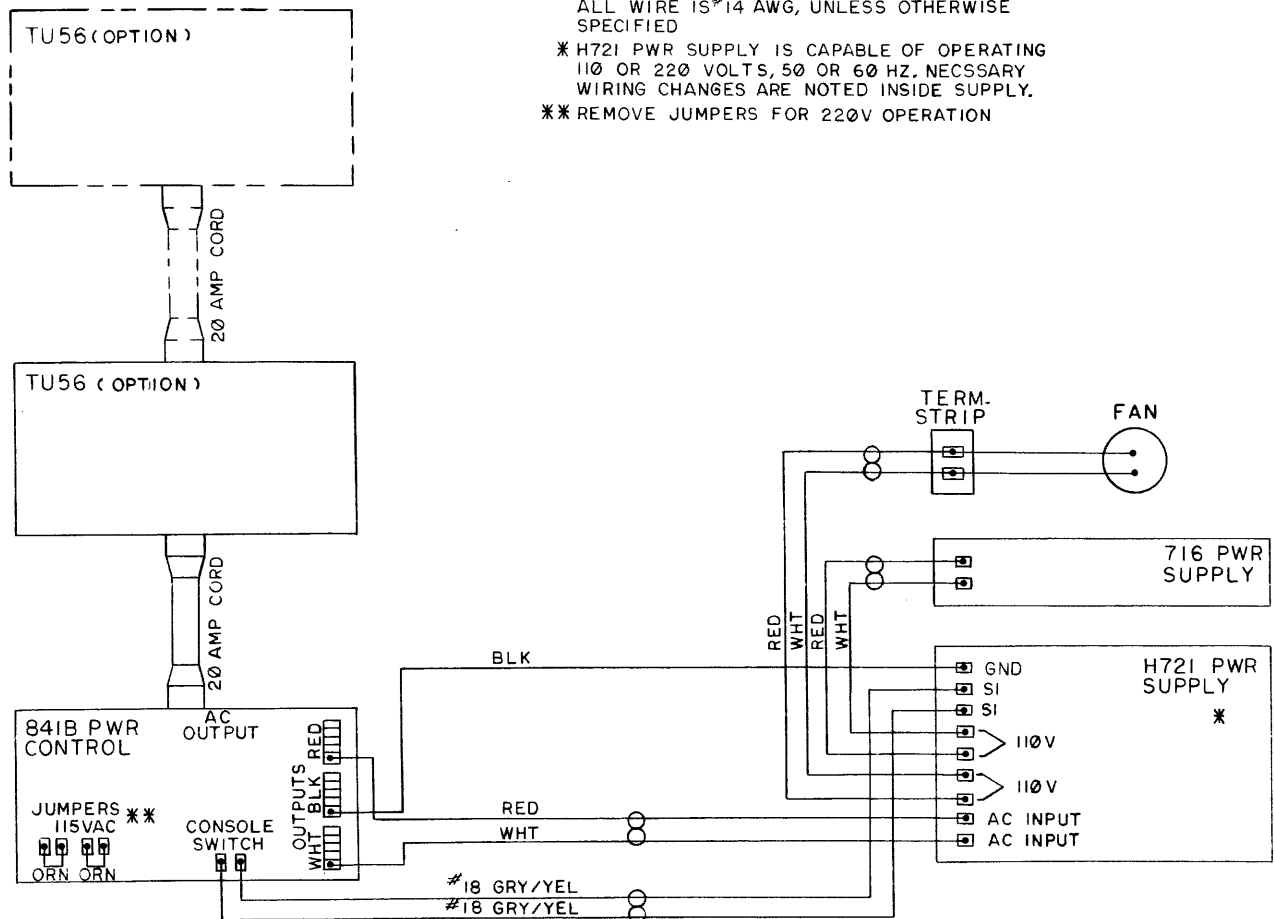
SIZE CODE NUMBER
DIMU TC15-0-17
REV. C

This drawing and specifications herein are the property of Digital Equipment Corporation and shall not be reproduced or copied or used in whole or in part as the basis for the manufacture or sale of items without written permission.

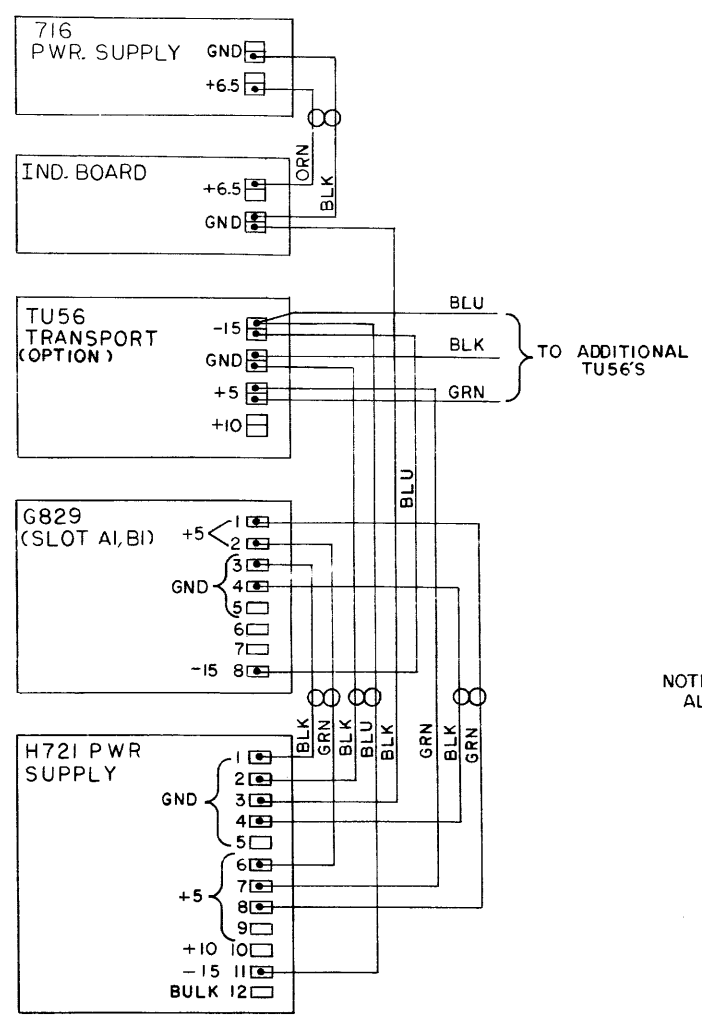
D
C
B
A

D
C
B
A

NOTE:
ALL WIRE IS #14 AWG, UNLESS OTHERWISE SPECIFIED
* H721 PWR SUPPLY IS CAPABLE OF OPERATING 110 OR 220 VOLTS, 50 OR 60 HZ. NECESSARY WIRING CHANGES ARE NOTED INSIDE SUPPLY.
** REMOVE JUMPERS FOR 220V OPERATION



AC POWER WIRING



NOTE:
ALL WIRE IS #14 AWG

DC POWER WIRING

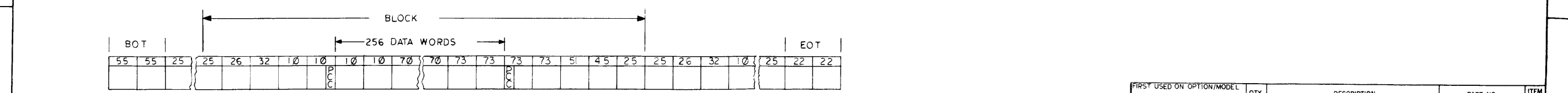
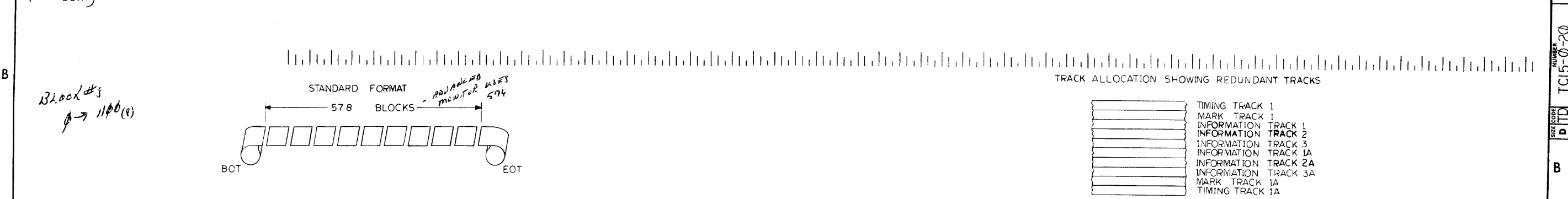
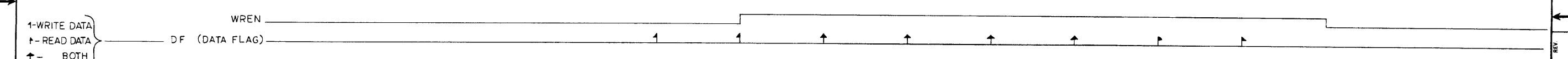
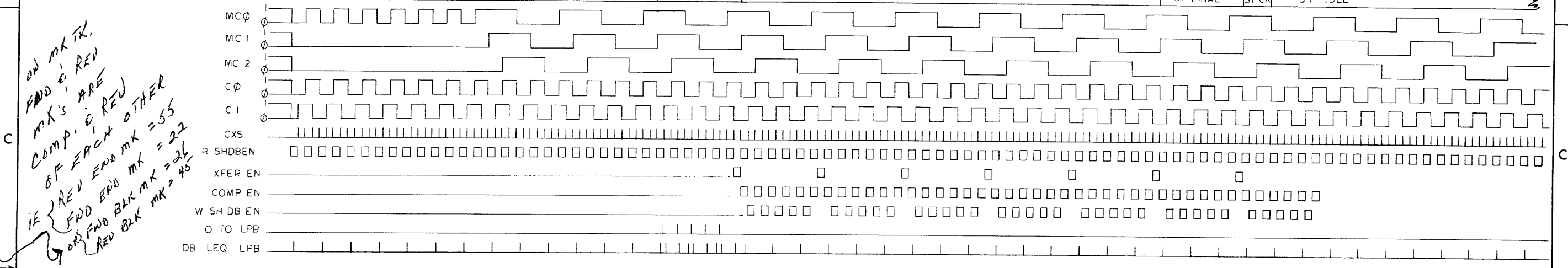
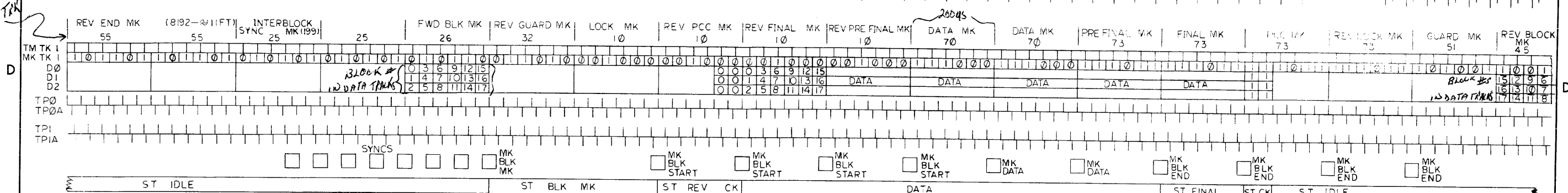
REV	CHANGE NO.

FIRST USED ON OPTION/MODEL
TC15

DO NOT SCALE DRAWING
UNLESS OTHERWISE SPECIFIED
DIMENSION IN INCHES
TOLERANCES
DECIMALS FRACTIONS ANGLES
= .005 = 1/64 = 0'30"
FINAL SURFACE QUALITY
REMOVE BURRS AND BREAK SHARP CORNERS

QTY.	DESCRIPTION	PART NO.	ITEM NO.
PARTS LIST			
DBN	DATE	digital EQUIPMENT CORPORATION MAYNARD, MASSACHUSETTS	
CHK'D	DATE	TITLE	
ENG.	DATE	AC/DC PWR WIRING TC15	
PROJ. ENG.	DATE	SIZE CODE NUMBER REV	
PROD.	DATE	DUA-TC15-0-0 DICTC15-0-19	
NEXT HIGHER ASSY		SCALE NONE	
DUA-TC15-0-0		SHEET OF	

This drawing and specifications herein are the property of Digital Equipment Corporation and shall not be reproduced or copied or used in whole or in part as the basis for the manufacture or sale of items without written permission.



REV	CHG	NO	REV	NO	REV	NO	REV	NO

REV	CHG	NO	REV	NO	REV	NO	REV	NO

REV	CHG	NO	REV	NO	REV	NO	REV	NO

REV	CHG	NO	REV	NO	REV	NO	REV	NO

Handwritten notes:
 210 110
 9100 101
 ON MK TR.
 FWD & REV
 MK'S ARE
 COMP. & REV
 OF EACH OTHER
 IE FWD END MK = 55
 OR FWD BLK MK = 22
 REV END MK = 22
 REV BLK MK = 45

FIRST USED ON OPTION/MODEL	QTY	DESCRIPTION	PART NO.	ITEM NO.
PDP15				
UNLESS OTHERWISE SPECIFIED	DRN	DATE	PARTS LIST	
UNLESS OTHERWISE SPECIFIED	CHK'D	DATE	digital EQUIPMENT CORPORATION	
UNLESS OTHERWISE SPECIFIED	ENG	DATE	GAYNARD MASSACHUSETTS	
TOLERANCES	PROJ. ENG.	DATE	TITLE	
DECIMALS = .005	FRAC	DATE	TC15 DEC TAPE TIMING	
FRACTIONS = 1/64	PROOF	DATE	MATERIAL	
ANGLES = 0°30'			NEXT HIGHER ASSY	
FINAL SURFACE QUALITY			A-VIL-TC15-C	
REMOVE BURRS AND BREAK SHARP CORNERS			FINISH	
			SCALE	
			SHEET OF	
			DIST.	

TC15-0-20
 DITD
 NUMBER
 SIZE CODE